

PDII With OPOS Driver

1. Unzip the files to a temporary folder on your hard drive. Install the CAS OPOS drivers on your computer by double-clicking on **SETUP.EXE** and follow the prompts.
2. In **My Computer**, go to your temporary folder and right click the file **CasScale.ocx** and select **Copy**.
3. Go to **C:/Program Files/CAS/CAS OPOS Driver** folder, right click on **CasScale.ocx** and select delete. Right click in the folder and select **Paste** to place the updated .ocx file into the folder.
4. Open the CAS OPOS Administrator.(See Figure 1)
5. Select properties and put in a scale instance.(eg. PD II) (See Figure 2)
6. Click apply and then OK. Exit the CAS OPOS Administrator.
7. Open the CAS OPOS Tester. Make sure the type setting in the PD II is set for Type 5. (See Changing ECR Type Setting of PD II). From the drop down menu select the scale instance that was used in the CAS OPOS Administrator. Click on test and the weight on the PD II will transfer to the computer. (See Figure 3)

Changing ECR Type Setting of PD II

- A. Turn off the PDII. While pressing the “#” key, turn on the power. “EcrSEt” is shown on the display, and then the current ECR type(eg. “tYPE-2”).
- B. Press the “*” or “lb/oz” key until the display shows “tYPE-5”.
- C. Save the type setting by pressing the Zero Key.

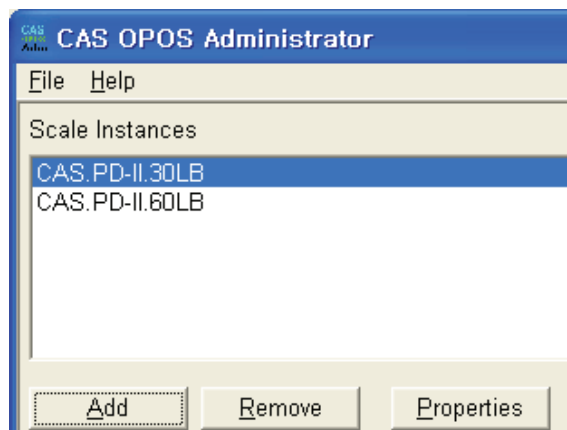


Figure 1

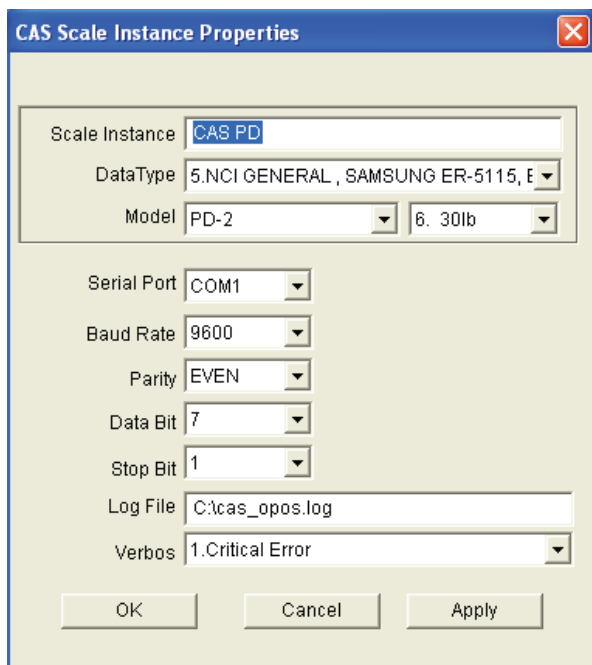


Figure 2

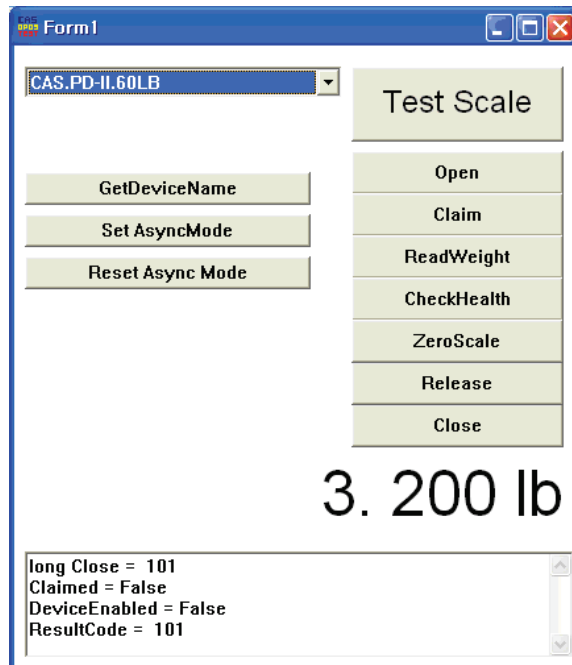


Figure 3